

Name: _____

Unit: _____

Cadet Music Proficiency Level One

Bassoon

BASSOON PROFICIENCY LEVEL MUSIC

| | List | Title | Book | Page |
|----------------|------|--------------------------------------|---|-------|
| Level Basic | 1. | Western Portrait | Best in Class – Bassoon | 19 |
| | 2. | Austrian Melody | Best in Class – Bassoon | 24 |
| | 3. | The Minstrel Boy | Best in Class – Bassoon | 28 |
| | 4. | Ode to Joy | Best in Class – Bassoon | 10 |
| | 5. | God Save the Queen (America) | Best in Class – Bassoon | 18 |
| | 6. | Scarborough Fair | Best in Class – Bassoon | 29 |
| Level One | 1. | First Waltz | Rubank Elementary Method – Bassoon | 6 |
| | 2. | Blue Bell of Scotland (Top Part) | Rubank Elementary Method – Bassoon | 25 |
| | 3. | Lullaby (Top Part) | Rubank Elementary Method – Bassoon | 46 |
| | 1. | Gavotte (Top Part) | Rubank Elementary Method – Bassoon | 47 |
| | 2. | Theme From Symphony No. 8 (Allegro) | Rubank Elementary Method – Bassoon | 47 |
| | 3. | Theme From Symphony No. 8 (Menuetto) | Rubank Elementary Method – Bassoon | 48 |
| Level Two | 1. | Duet in Bb Major (Top Part) | Rubank Intermediate Method – Bassoon | 24 |
| | 2. | B Minor Etude | Rubank Intermediate Method – Bassoon | 23 |
| | 3. | C Minor Etude | Rubank Intermediate Method – Bassoon | 31 |
| | 1. | Duet in C Major (Top Part) | Rubank Intermediate Method – Bassoon | 17 |
| | 2. | Midsummer Night's Dream | Rubank Intermediate Method – Bassoon | 35 |
| | 3. | Marcia | Rubank Intermediate Method – Bassoon | 36 |
| Level Three | 1. | Andante #18 | Rubank Advanced Method Vol. 1 – Bassoon | 32 |
| | 2. | Romanze | Rubank Advanced Method Vol. 1 – Bassoon | 72 |
| | 3. | Lento #28 | Rubank Advanced Method Vol. 1 – Bassoon | 40 |
| | 1. | Allegro #16 | Rubank Advanced Method Vol. 1 – Bassoon | 47 |
| | 2. | Moderato #2 | Rubank Advanced Method Vol. 1 – Bassoon | 41 |
| | 3. | German Dance | Rubank Advanced Method Vol. 1 – Bassoon | 69 |
| Level Four | 1. | Allegro | 16 Studi Giornalieri di Perfezionamento | 6-7 |
| | 2. | Allegro | 16 Studi Giornalieri di Perfezionamento | 4-5 |
| | 1. | Allegro | 16 Studi Giornalieri di Perfezionamento | 10-11 |
| | 2. | Allegro Moderato | 16 Studi Giornalieri di Perfezionamento | 14-15 |
| Level Five | 1. | Moderato | 16 Studi Giornalieri di Perfezionamento | 26-27 |
| | 2. | Allegro Moderato – Ma Brillante | 16 Studi Giornalieri di Perfezionamento | 24-25 |
| | 1. | Allegro Moderato | 16 Studi Giornalieri di Perfezionamento | 30-31 |
| | 2. | Moderato | 16 Studi Giornalieri di Perfezionamento | 28-29 |

LESSON 5

1-2-3 1-2-3 1-2-3

This exercise is written on a single bass clef staff. It consists of three measures, each containing a triplet of eighth notes. The first measure has a slur over the notes, and the second and third measures also have slurs. The notes are G2, A2, B2 in the first measure; C3, D3, E3 in the second; and F3, G3, A3 in the third.

Petite Duet

1-2-3-4

This section is a duet for two bass clef staves. The first staff is marked with a '1' and contains a sequence of eighth notes with slurs, starting with a '1-2-3-4' fingering. The second staff provides a harmonic accompaniment with a steady eighth-note pattern.

$\frac{3}{4}$ Studies

1-2-3

This section contains three staves of music in 3/4 time. The first staff is marked with a '2' and includes a '1-2-3' fingering. The music consists of eighth and quarter notes, with slurs and rests throughout.

First Waltz

German

This section contains four staves of music in 3/4 time. The first staff is marked with a '3'. The music features a waltz-like melody with slurs and rests, typical of the genre.

E \flat Major

E E \flat D

1

E \flat Major Chord

2

E \flat Major Scale

3

Technical Study in E \flat

4

Blue Bells of Scotland

5

Alma Mater

Moderato

Old American

Musical score for 'Alma Mater' in bass clef, 2/4 time, key of B-flat major. The score consists of three systems of three staves each. The first system is marked *ff*. The second system is marked *mf*, *f*, and *rit.*. The third system is marked *mf* and *rit.*.

Lullaby

BRAHMS

Andante

Musical score for 'Lullaby' in bass clef, 3/4 time, key of B-flat major. The score consists of two systems of three staves each. The first system is marked *p*. The second system is marked *rit.*.

Allegretto

Gavotte

GOSSEC

Musical score for Gavotte by Gossec, featuring two staves of bass clef notation in 3/4 time. The piece is marked Allegretto. The score includes dynamics such as *p* (piano) and *f* (forte), and performance instructions like *accel.* (accelerando) and *rit.* (ritardando).

Bassoon Theme from Jupiter Symphony

MOZART

Allegro

Musical score for Bassoon Theme from Jupiter Symphony by Mozart, featuring four staves of bass clef notation in 3/4 time. The piece is marked Allegro. The score includes various musical notations such as slurs, accents, and dynamic markings.

Theme from Symphony No. 8

BEETHOVEN

Allegro

Musical score for Theme from Symphony No. 8 by Beethoven, featuring three staves of bass clef notation in 3/4 time. The piece is marked Allegro. The score includes dynamics such as *f* (forte) and *rit.* (ritardando).

Menuetto

Theme from Symphony No. 8

BEETHOVEN

1st Symphony

BEETHOVEN

Andante Cantabile

Bassoon Parts


PO 113W – MAINTAIN A PRIMARY WOODWIND INSTRUMENT

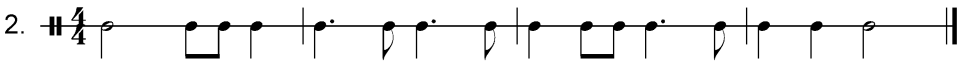
1. **Performance.** Maintain a Primary Woodwind Instrument.
2. **Conditions**
 - a. Given:
 - (1) Primary instrument,
 - (2) Supervision, and
 - (3) Assistance as required.
 - b. Denied: N/A.
 - c. Environmental: A quiet room free from distractions.
3. **Standard.** The cadet will maintain a primary woodwind instrument by cleaning the exterior of the instrument with a cloth.
4. **Remarks.** This PO applies only to the instrument on which the cadet is trying to obtain a cadet musician level qualification.

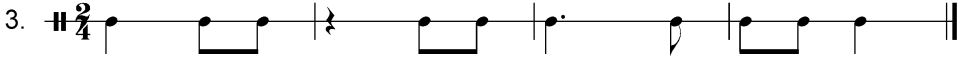
PO 116 – DEMONSTRATE RHYTHM SKILLS

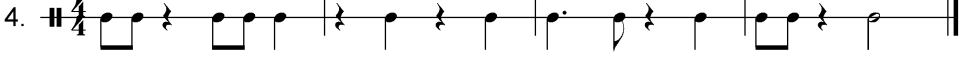
1. **Performance.** Demonstrate Rhythm Skills.
2. **Conditions**
 - a. Given:
 - (1) Level One rhythm sheet, and
 - (2) Supervision.
 - b. Denied: Assistance.
 - c. Environmental: A quiet room with adequate lighting and free from distractions.
3. **Standard.** The cadet will demonstrate rhythm skills by singing, clapping, tapping or counting Level One rhythms while respecting a steady tempo.
4. **Remarks**
 - a. The cadet will be given time to practice the Level One rhythm sheet before the assessment.
 - b. Level One Rhythm Sheet is found in [Annex A, Appendix 2](#).

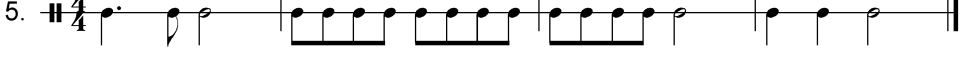
LEVEL ONE RHYTHM SHEET

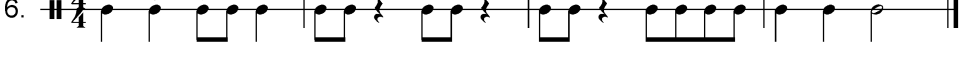
1. $\# \frac{3}{4}$ 

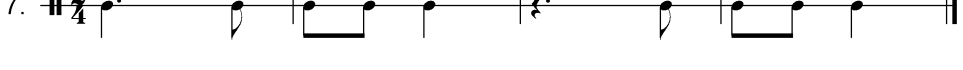
2. $\# \frac{4}{4}$ 

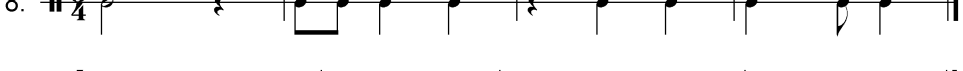
3. $\# \frac{2}{4}$ 


4. $\# \frac{4}{4}$ 


5. $\# \frac{4}{4}$ 


6. $\# \frac{4}{4}$ 

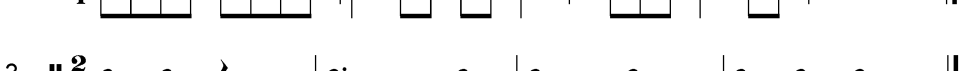
7. $\# \frac{2}{4}$ 

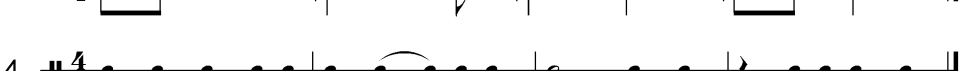
8. $\# \frac{3}{4}$ 

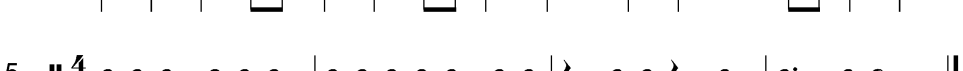
9. $\# \frac{4}{4}$ 


10. $\# \frac{4}{4}$ 

11. $\# \frac{3}{4}$ 

12. $\# \frac{4}{4}$ 

13. $\# \frac{2}{4}$ 

14. $\# \frac{4}{4}$ 

15. $\# \frac{4}{4}$ 

PO 118 – SIGHT-READ MUSIC

1. **Performance.** Sight-Read Music.
2. **Conditions**
 - a. Given:
 - (1) Primary instrument,
 - (2) Music stand,
 - (3) Metronome,
 - (4) Level One sight-reading music,
 - (5) Supervision, and
 - (6) Assistance as required.
 - b. Denied: N/A.
 - c. Environmental: A quiet room with adequate lighting and free from distractions.
3. **Standard.** The cadet will sight-read music observing:
 - a. rhythm,
 - b. a steady tempo,
 - c. pitch, and
 - d. musical flow.
4. **Remarks**
 - a. Assistance given is in the form of guiding questions limited to:
 - (1) What is the time signature? How many beats in a measure? Which note value gets the beat?
 - (2) How many sharps/flats are in the key signature? Which notes are sharp/flat?
 - (3) Which accidentals do you see? What are the fingerings for those notes?
 - (4) Can you clap the rhythm?
 - b. The music will be a maximum of 16 measures in length and minimum of four measures.
 - c. The music will not exceed the technical requirements for Level Basic.
 - d. A brief period of time will be given prior to playing for the cadet to examine the music.

SCALE REQUIREMENTS BY INSTRUMENT

BASSOON

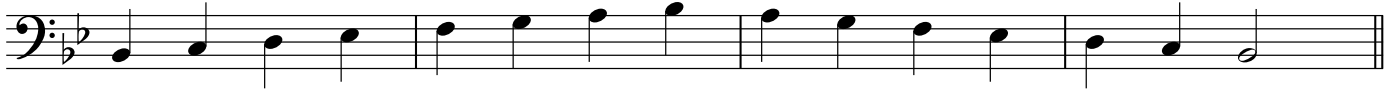
| | | | | | | | | | | | | | |
|------------------|----------------|---|-----------|-------------|-------------|-------------|----------------|----------------|----------------|------------------|-----|-----|-----|
| MPL BASIC | Major | F | | | | | | | | | | | |
| | Harmonic Minor | Nil. | | | | | | | | | | | |
| | Melodic Minor | Nil. | | | | | | | | | | | |
| | Chromatic | Nil. | | | | | | | | | | | |
| | Articulation | All slurred or all tongued. | | | | | | | | M.M. ♩ = 60 in ♩ | | | |
| MPL ONE | Major | F | B \flat | E \flat | | | | | | | | | |
| | Harmonic Minor | D | G | C | | | | | | | | | |
| | Melodic Minor | Nil. | | | | | | | | | | | |
| | Chromatic | B \flat chromatic | | | | | | | | | | | |
| | Articulation | All slurred and all tongued. | | | | | | | | M.M. ♩ = 66 in ♩ | | | |
| MPL TWO | Major | C | F | B \flat | E \flat | A \flat | | | | | | | |
| | Harmonic Minor | A | D | G | C | F | | | | | | | |
| | Melodic Minor | Nil. | | | | | | | | | | | |
| | Chromatic | C chromatic | | | | | | | | | | | |
| | Articulation | All slurred and all tongued. | | | | | | | | M.M. ♩ = 72 in ♩ | | | |
| MPL THREE | Major | C* | F* | B \flat * | E \flat * | A \flat * | D \flat /C#* | G* | | | | | |
| | Harmonic Minor | A* | D* | G* | C* | F* | B \flat /A#* | E* | | | | | |
| | Melodic Minor | A* | D* | G* | C* | F* | B \flat /A#* | E* | | | | | |
| | Chromatic | D chromatic* | | | | | | | | | | | |
| | Articulation | All slurred; all tongued; slur 2 tongue 2; tongue 2 slur 2. | | | | | | | | M.M. ♩ = 60 in ♩ | | | |
| MPL FOUR | Major | C* | F* | B \flat * | E \flat * | A \flat * | D \flat /C#* | G \flat /F#* | G* | D* | A* | | |
| | Harmonic Minor | A* | D* | G* | C* | F* | B \flat /A#* | E \flat /D#* | E* | B* | F#* | | |
| | Melodic Minor | A* | D* | G* | C* | F* | B \flat /A#* | E \flat /D#* | E* | B* | F#* | | |
| | Chromatic | E chromatic* | | | | | | | | | | | |
| | Articulation | All slurred; all tongued; slur 2 tongue 2; tongue 2 slur 2. | | | | | | | | M.M. ♩ = 72 in ♩ | | | |
| MPL FIVE | Major | C* | F* | B \flat * | E \flat * | A \flat * | D \flat /C#* | G \flat /F#* | C \flat /B* | G* | D* | A* | E* |
| | Harmonic Minor | A* | D* | G* | C* | F* | B \flat /A#* | E \flat /D#* | A \flat /G#* | E* | B* | F#* | C#* |
| | Melodic Minor | A* | D* | G* | C* | F* | B \flat /A#* | E \flat /D#* | A \flat /G#* | E* | B* | F#* | C#* |
| | Chromatic | F chromatic* | | | | | | | | | | | |
| | Articulation | All slurred; all tongued; slur 2 tongue 2; tongue 2 slur 2. | | | | | | | | M.M. ♩ = 80 in ♩ | | | |

Scales marked * are to be played two octaves.

Bassoon Level One

♩ = 66

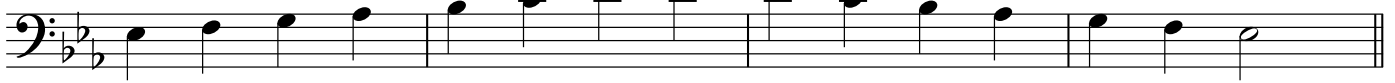
Bb Major



F Major



Eb Major



D Harmonic Minor



G Harmonic Minor



C Harmonic Minor



Bb Chromatic

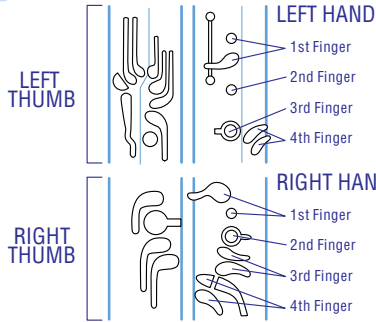


Student Page 46 Bassoon

Advantage

Fingerings

- Open ○
- Pressed ●
- Half-Hole ◐
- Alternate Fingerings



A# Bb **B** **C** **C# Db** **D**

D# Eb **E** **F** **F# Gb**

G **G# Ab** **A** **A# Bb** **B** **C**

The page contains three systems of musical notation for the bassoon. Each system consists of a bass clef staff with a note, followed by two diagrams of the instrument's keys and fingerings. The first diagram shows the left hand (thumb and four fingers) and the second shows the right hand (thumb and four fingers). The notes and their fingerings are as follows:

- System 1:** A# (Left thumb pressed, Right thumb pressed, Left 1st finger pressed, Right 1st finger pressed), Bb (Left thumb pressed, Right thumb pressed, Left 1st finger pressed, Right 1st finger pressed), B (Left thumb pressed, Right thumb pressed, Left 1st finger pressed, Right 1st finger pressed), C (Left thumb pressed, Right thumb pressed, Left 1st finger pressed, Right 1st finger pressed), C# (Left thumb pressed, Right thumb pressed, Left 1st finger pressed, Right 1st finger pressed), Db (Left thumb pressed, Right thumb pressed, Left 1st finger pressed, Right 1st finger pressed), D (Left thumb pressed, Right thumb pressed, Left 1st finger pressed, Right 1st finger pressed).
- System 2:** D# (Left thumb pressed, Right thumb pressed, Left 1st finger pressed, Right 1st finger pressed), Eb (Left thumb pressed, Right thumb pressed, Left 1st finger pressed, Right 1st finger pressed), E (Left thumb pressed, Right thumb pressed, Left 1st finger pressed, Right 1st finger pressed), F (Left thumb pressed, Right thumb pressed, Left 1st finger pressed, Right 1st finger pressed), F# (Left thumb pressed, Right thumb pressed, Left 1st finger pressed, Right 1st finger pressed), Gb (Left thumb pressed, Right thumb pressed, Left 1st finger pressed, Right 1st finger pressed).
- System 3:** G (Left thumb pressed, Right thumb pressed, Left 1st finger pressed, Right 1st finger pressed), G# (Left thumb pressed, Right thumb pressed, Left 1st finger pressed, Right 1st finger pressed), Ab (Left thumb pressed, Right thumb pressed, Left 1st finger pressed, Right 1st finger pressed), A (Left thumb pressed, Right thumb pressed, Left 1st finger pressed, Right 1st finger pressed), A# (Left thumb pressed, Right thumb pressed, Left 1st finger pressed, Right 1st finger pressed), Bb (Left thumb pressed, Right thumb pressed, Left 1st finger pressed, Right 1st finger pressed), B (Left thumb pressed, Right thumb pressed, Left 1st finger pressed, Right 1st finger pressed), C (Left thumb pressed, Right thumb pressed, Left 1st finger pressed, Right 1st finger pressed).

The following products are recommended for complete care of your instrument:

Cleaning gauze · Swab · Pad cleaning paper · Polishing cloth · Tone hole cleaner

The chart displays fingerings for the following notes:

- Row 1:** C# (F#), Db (C), D, D# (Eb), E, F
- Row 2:** F# (Eb), Gb (F), G, G# (F#), Ab (G), A, A# (G#), Bb (A)
- Row 3:** B, C, G# (F#), Db (C), D, D# (Eb), E, F

