

Name: _____

Unit: _____

Cadet Music Proficiency Level Two

Bassoon

BASSOON PROFICIENCY LEVEL MUSIC

	List	Title	Book	Page
Level Basic	1.	Western Portrait	Best in Class – Bassoon	19
	2.	Austrian Melody	Best in Class – Bassoon	24
	3.	The Minstrel Boy	Best in Class – Bassoon	28
	4.	Ode to Joy	Best in Class – Bassoon	10
	5.	God Save the Queen (America)	Best in Class – Bassoon	18
	6.	Scarborough Fair	Best in Class – Bassoon	29
Level One	1.	First Waltz	Rubank Elementary Method – Bassoon	6
	2.	Blue Bell of Scotland (Top Part)	Rubank Elementary Method – Bassoon	25
	3.	Lullaby (Top Part)	Rubank Elementary Method – Bassoon	46
	1.	Gavotte (Top Part)	Rubank Elementary Method – Bassoon	47
	2.	Theme From Symphony No. 8 (Allegro)	Rubank Elementary Method – Bassoon	47
	3.	Theme From Symphony No. 8 (Menuetto)	Rubank Elementary Method – Bassoon	48
Level Two	1.	Duet in Bb Major (Top Part)	Rubank Intermediate Method – Bassoon	24
	2.	B Minor Etude	Rubank Intermediate Method – Bassoon	23
	3.	C Minor Etude	Rubank Intermediate Method – Bassoon	31
	1.	Duet in C Major (Top Part)	Rubank Intermediate Method – Bassoon	17
	2.	Midsummer Night's Dream	Rubank Intermediate Method – Bassoon	35
	3.	Marcia	Rubank Intermediate Method – Bassoon	36
Level Three	1.	Andante #18	Rubank Advanced Method Vol. 1 – Bassoon	32
	2.	Romanze	Rubank Advanced Method Vol. 1 – Bassoon	72
	3.	Lento #28	Rubank Advanced Method Vol. 1 – Bassoon	40
	1.	Allegro #16	Rubank Advanced Method Vol. 1 – Bassoon	47
	2.	Moderato #2	Rubank Advanced Method Vol. 1 – Bassoon	41
	3.	German Dance	Rubank Advanced Method Vol. 1 – Bassoon	69
Level Four	1.	Allegro	16 Studi Giornalieri di Perfezionamento	6-7
	2.	Allegro	16 Studi Giornalieri di Perfezionamento	4-5
	1.	Allegro	16 Studi Giornalieri di Perfezionamento	10-11
	2.	Allegro Moderato	16 Studi Giornalieri di Perfezionamento	14-15
Level Five	1.	Moderato	16 Studi Giornalieri di Perfezionamento	26-27
	2.	Allegro Moderato – Ma Brillante	16 Studi Giornalieri di Perfezionamento	24-25
	1.	Allegro Moderato	16 Studi Giornalieri di Perfezionamento	30-31
	2.	Moderato	16 Studi Giornalieri di Perfezionamento	28-29

Duet in B \flat Major

Andante

1 *p cantabile (in a singing style)* *mf*

SYNCOPIATION ACROSS THE BAR LINE

Allegretto

2 *p* *Fine*

f *D.C. al Fine*

TENOR CLEF STUDY

rfz (*rinforsando*) and *rf* (*rinforsso*) both mean reinforced or emphasized.

Andante con moto

3 *p*

f *marcato*

rfz *p* *rf > p*

Play the eighth notes staccato, but with a *light* stroke of the tongue.

Andantino

MOZART

1 *p dolce*

B MINOR SCALES

Harmonic Minor

2

Melodic Minor

3

B MINOR ETUDE

Andante

4 *p espressivo*

allargando
(gradually broader) *p a tempo*

p dim.

Andante

1

f sonorously *p dolce* *f*

p *f* *p dolce* *f*

f *p* *f*

MAGIC FLUTE OVERTURE
(Orchestral Excerpt)

MOZART

Allegro

2

p *f* *p* *f* *p* *f* *p* *f*

p *fp* *f* *p* *f*

p *f* *p* *f* *p* *f*

C MINOR SCALES

Harmonic Minor

3

Melodic Minor

4

C MINOR ETUDE

Andante

5

mf *cresc.* *f*

dim.

p *cresc.* *f*

Duet in C Major

Allegro

1

f

f

p

p

mf

mf

p

cresc.

f

A MIDSUMMER NIGHT'S DREAM

(Orchestral Excerpt)

MEDELSSOHN

Practice also with trill fingering for high F#.

Allegro molto comodo

1

p

cresc.

sf cresc. *sf* *sf* *sf*

ff *sf* *sf* *p*

Detailed description: This system contains four staves of music in bass clef, 2/4 time, with a key signature of two sharps (F# and C#). The first staff begins with a dynamic marking of *p* and features a trill on the high F# note. The second staff includes a first ending bracket labeled '1' and a dynamic marking of *cresc.*. The third staff has dynamic markings of *sf cresc.*, *sf*, *sf*, and *sf*. The fourth staff starts with *ff*, followed by *sf*, *sf*, and ends with a *p* dynamic marking and a fermata.

F# MINOR SCALES

Harmonic Minor

2

Detailed description: A single staff of music in bass clef, 2/4 time, showing the F# Harmonic Minor scale. The notes are F#, G, A, B, C, D, E, F#.

Melodic Minor

3

Detailed description: A single staff of music in bass clef, 2/4 time, showing the F# Melodic Minor scale. The notes are F#, G, A, B, C, D, E, F#.

F# MINOR ETUDE

Slowly

4

p dolce

p *f* *rit.*

p *fp* *p*

f *mf* *rf* *p*

Detailed description: This section contains four staves of music in bass clef, 2/4 time, with a key signature of two sharps. The first staff is marked *p dolce*. The second staff has dynamics *p*, *f*, and *rit.*. The third staff has dynamics *p*, *fp*, and *p*. The fourth staff has dynamics *f*, *mf*, *rf*, and *p*. There are various musical notations including slurs, accents, and a trill marked with a circled '1'.

Studies in A \flat Major

A \flat Major Scale

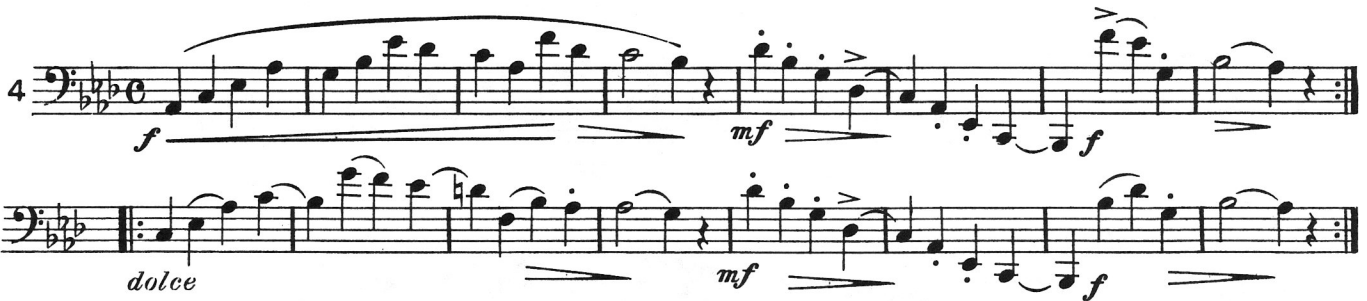
1 

Scale in Thirds

2 

A \flat Major Arpeggio

3 

4 

Marcia (March time)

5 

PO 213W – MAINTAIN A PRIMARY WOODWIND INSTRUMENT

1. **Performance.** Maintain a Primary Woodwind Instrument.
2. **Conditions**
 - a. Given:
 - (1) Primary instrument,
 - (2) Pad papers,
 - (3) Supervision, and
 - (4) Assistance as required.
 - b. Denied: N/A.
 - c. Environmental: A quiet room free from distractions.
3. **Standard.** The cadet will maintain a primary woodwind instrument by removing residue from a pad.
4. **Remarks.** This PO applies only to the instrument on which the cadet is trying to obtain a cadet musician level qualification.

PO 216 – DEMONSTRATE RHYTHM AND AURAL SKILLS

1. **Performance.** Demonstrate Rhythm and Aural Skills.
2. **Conditions**
 - a. Given:
 - (1) Level Two rhythm sheet, and
 - (2) Supervision.
 - b. Denied: Assistance.
 - c. Environmental: A quiet room with adequate lighting and free from distractions.
3. **Standard.** The cadet will demonstrate rhythm skills, by:
 - a. singing, clapping, tapping or counting Level Two rhythms while maintaining a steady tempo; and
 - b. singing or playing back a five-note melody.
4. **Remarks**
 - a. The cadet will be given time to practice the Level Two rhythm sheet before the assessment.
 - b. Level Two Rhythm Sheet is found in [Annex A, Appendix 3](#).
 - c. Cadets may use solfege syllables, “*lu*”, “*la*”, or note names to sing back the melody.
 - d. In Level Two, a melody uses only the first five notes of a major scale, begins on the tonic note and contains only step-wise motion. It must be within the vocal range of the cadet.

PO 218 – SIGHT-READ MUSIC

1. **Performance.** Sight-Read Music.
2. **Conditions**
 - a. Given:
 - (1) Primary instrument,
 - (2) Music stand,
 - (3) Level Two sight-reading music, and
 - (4) Supervision.
 - b. Denied: Assistance.
 - c. Environmental: A quiet room with adequate lighting and free from distractions.
3. **Standard.** The cadet will sight-read music observing:
 - a. rhythm,
 - b. a steady tempo,
 - c. pitch, and
 - d. musical flow.
4. **Remarks**
 - a. The music will be a maximum of 16 measures in length and a minimum of four measures.
 - b. The music will not exceed the technical requirements for Level One.
 - c. A brief period of time will be given prior to playing for the cadet to examine the music.

SCALE REQUIREMENTS BY INSTRUMENT

BASSOON

MPL BASIC	Major	F											
	Harmonic Minor	Nil.											
	Melodic Minor	Nil.											
	Chromatic	Nil.											
	Articulation	All slurred or all tongued.									M.M. ♩ = 60 in ♩		
MPL ONE	Major	F	B \flat	E \flat									
	Harmonic Minor	D	G	C									
	Melodic Minor	Nil.											
	Chromatic	B \flat chromatic											
	Articulation	All slurred and all tongued.									M.M. ♩ = 66 in ♩		
MPL TWO	Major	C	F	B \flat	E \flat	A \flat							
	Harmonic Minor	A	D	G	C	F							
	Melodic Minor	Nil.											
	Chromatic	C chromatic											
	Articulation	All slurred and all tongued.									M.M. ♩ = 72 in ♩		
MPL THREE	Major	C*	F*	B \flat *	E \flat *	A \flat *	D \flat /C \sharp *	G*					
	Harmonic Minor	A*	D*	G*	C*	F*	B \flat /A \sharp *	E*					
	Melodic Minor	A*	D*	G*	C*	F*	B \flat /A \sharp *	E*					
	Chromatic	D chromatic*											
	Articulation	All slurred; all tongued; slur 2 tongue 2; tongue 2 slur 2.									M.M. ♩ = 60 in ♩		
MPL FOUR	Major	C*	F*	B \flat *	E \flat *	A \flat *	D \flat /C \sharp *	G \flat /F \sharp *	G*	D*	A*		
	Harmonic Minor	A*	D*	G*	C*	F*	B \flat /A \sharp *	E \flat /D \sharp *	E*	B*	F \sharp *		
	Melodic Minor	A*	D*	G*	C*	F*	B \flat /A \sharp *	E \flat /D \sharp *	E*	B*	F \sharp *		
	Chromatic	E chromatic*											
	Articulation	All slurred; all tongued; slur 2 tongue 2; tongue 2 slur 2.									M.M. ♩ = 72 in ♩		
MPL FIVE	Major	C*	F*	B \flat *	E \flat *	A \flat *	D \flat /C \sharp *	G \flat /F \sharp *	C \flat /B*	G*	D*	A*	E*
	Harmonic Minor	A*	D*	G*	C*	F*	B \flat /A \sharp *	E \flat /D \sharp *	A \flat /G \sharp *	E*	B*	F \sharp *	C \sharp *
	Melodic Minor	A*	D*	G*	C*	F*	B \flat /A \sharp *	E \flat /D \sharp *	A \flat /G \sharp *	E*	B*	F \sharp *	C \sharp *
	Chromatic	F chromatic*											
	Articulation	All slurred; all tongued; slur 2 tongue 2; tongue 2 slur 2.									M.M. ♩ = 80 in ♩		

Scales marked * are to be played two octaves.

Bassoon
Level Two

♩ = 72

C Major



F Major



Bb Major



Eb Major



Ab Major



A Harmonic Minor



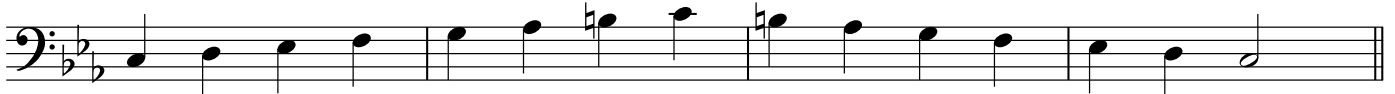
D Harmonic Minor



G Harmonic Minor



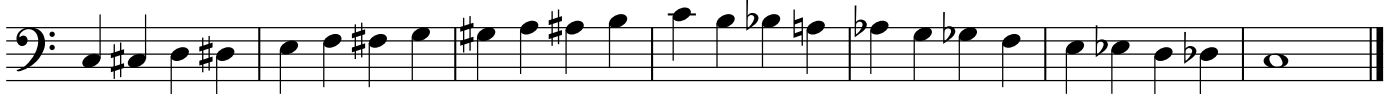
C Harmonic Minor



F Harmonic Minor



C Chromatic

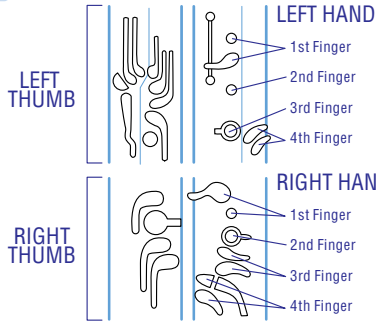


Student Page 46 Bassoon

Advantage

Fingerings

- Open ○
- Pressed ●
- Half-Hole ◐
- Alternate Fingerings



Row 1: A# Bb, B, C, C# Db, D

Row 2: D# Eb, E, F, F# Gb

Row 3: G, G# Ab, A, A# Bb, B, C

The page contains three rows of musical notation in bass clef. Each row consists of a staff with a note and its fingering diagrams. The fingering diagrams are organized into columns corresponding to the notes above. Some diagrams are highlighted with a blue background to indicate alternate fingerings. The notes and their fingering diagrams are as follows:

- Row 1:** A# (Left thumb pressed, Right thumb pressed, Left hand 1st-4th fingers, Right hand 1st-4th fingers), Bb (Left thumb pressed, Right thumb pressed, Left hand 1st-4th fingers, Right hand 1st-4th fingers), B (Left thumb pressed, Right thumb pressed, Left hand 1st-4th fingers, Right hand 1st-4th fingers), C (Left thumb pressed, Right thumb pressed, Left hand 1st-4th fingers, Right hand 1st-4th fingers), C# (Left thumb pressed, Right thumb pressed, Left hand 1st-4th fingers, Right hand 1st-4th fingers), Db (Left thumb pressed, Right thumb pressed, Left hand 1st-4th fingers, Right hand 1st-4th fingers), D (Left thumb pressed, Right thumb pressed, Left hand 1st-4th fingers, Right hand 1st-4th fingers).
- Row 2:** D# (Left thumb pressed, Right thumb pressed, Left hand 1st-4th fingers, Right hand 1st-4th fingers), Eb (Left thumb pressed, Right thumb pressed, Left hand 1st-4th fingers, Right hand 1st-4th fingers), E (Left thumb pressed, Right thumb pressed, Left hand 1st-4th fingers, Right hand 1st-4th fingers), F (Left thumb pressed, Right thumb pressed, Left hand 1st-4th fingers, Right hand 1st-4th fingers), F# (Left thumb pressed, Right thumb pressed, Left hand 1st-4th fingers, Right hand 1st-4th fingers), Gb (Left thumb pressed, Right thumb pressed, Left hand 1st-4th fingers, Right hand 1st-4th fingers).
- Row 3:** G (Left thumb pressed, Right thumb pressed, Left hand 1st-4th fingers, Right hand 1st-4th fingers), G# (Left thumb pressed, Right thumb pressed, Left hand 1st-4th fingers, Right hand 1st-4th fingers), Ab (Left thumb pressed, Right thumb pressed, Left hand 1st-4th fingers, Right hand 1st-4th fingers), A (Left thumb pressed, Right thumb pressed, Left hand 1st-4th fingers, Right hand 1st-4th fingers), A# (Left thumb pressed, Right thumb pressed, Left hand 1st-4th fingers, Right hand 1st-4th fingers), Bb (Left thumb pressed, Right thumb pressed, Left hand 1st-4th fingers, Right hand 1st-4th fingers), B (Left thumb pressed, Right thumb pressed, Left hand 1st-4th fingers, Right hand 1st-4th fingers), C (Left thumb pressed, Right thumb pressed, Left hand 1st-4th fingers, Right hand 1st-4th fingers).

The following products are recommended for complete care of your instrument:

Cleaning gauze · Swab · Pad cleaning paper · Polishing cloth · Tone hole cleaner

The chart displays fingerings for the following notes in the bass clef:

- Row 1:** C# (F#), Db (Bb), D, D# (Eb), E, F
- Row 2:** F# (Eb), Gb (F), G, G# (F#), Ab (G), A, A# (G#), Bb (Ab)
- Row 3:** B, C, G# (F#), Db (Bb), D, D# (Eb), Eb (D), E, F

Fingering diagrams are provided for each note, showing the placement of fingers on the keys. Some diagrams are highlighted in blue, indicating specific fingerings or techniques.

